



made in Italy - globally renowned



## Product

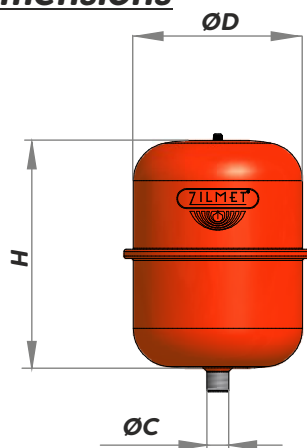
### CAL-PRO Wall Mounted Heating Expansion Vessels

Code	Description
1300000400B	CAL-PRO 4-Litre Wall-Mounted Heating Vessel & Bracket
1300000800B	CAL-PRO 8-Litre Wall-Mounted Heating Vessel & Bracket
1300001200B	CAL-PRO 12-Litre Wall-Mounted Heating Vessel & Bracket
1300001800B	CAL-PRO 18-Litre Wall-Mounted Heating Vessel & Bracket
1300002400B	CAL-PRO 24-Litre Wall-Mounted Heating Vessel & Bracket

## Technical Specification

Operating temperature:	-10°C - 99°C
Max working pressures:	4-8L: 5 Bar / 12-24L: 4 Bar
Connection:	3/4" G
Pre Charge:	1.5 Bar
Membrane:	Synthetic butyl rubber diaphragm (SBR) according to DIN 4807-3
Shell and connection construction:	Carbon Steel

## Dimensions



Capacity (Litres)	Diameter Ø (mm)	Height H (mm)
4	225	195
8	220	295
12	294	281
18	290	375
25	324	415

## Additional Information

5 years warranty

100% factory tested

Epoxy-Polyester Powder Finish

Suitable for multiple types of heating systems

MIG welding eliminates interior rough spots and sharp edges

Manufactured according to PED 2014/68/EU for centralized non potable water heating systems

Bracket Supplied

Scan here for more information and the vessel sizing calculator!

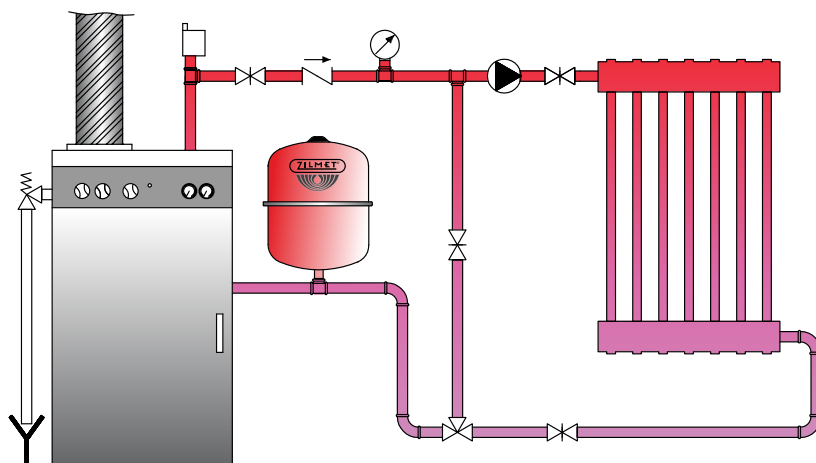


Scan for Further Information



Scan for Vessel Sizing Calculator

## Typical Installation



Zilmet UK Limited, Airfield Industrial Estate, Hixon, Stafford, ST18 0PF

T. 01889 272185 E. [sales@zilmet.co.uk](mailto:sales@zilmet.co.uk)